



COLINA DOS CEDROS RESIDENCE

Developed by:



**COLINAS DO
CRUZEIRO S.A.**
LOCATE, BUILD AND LIVE

PROJECT



COLINA
DOS CEDROS
RESIDENCE



COLINAS DO CRUZEIRO S.A.
LOCATE, BUILD AND LIVE

Residence I

Condominium with 39 Apartments

T3 – 8 apts, T4 – 16 apts, T5 – 15 apts and one T6 Duplex

Terminus November 2020

Residence II

Condominium with 32 Apartments

T4 – 16 apts and T5 – 16 apts

Terminus September 2022

Residence III *

Condominium with 24 Apartments

T4 – 12 apts and T5 – 12 apts

*Available Soon

Terminus February 2023





PROJECT



Location – Colinas do Cruzeiro

Inserted at the top of a hillside, **Colina dos Cedros stands alone in the front line of the one and only development on the South-East** part of Colinas do Cruzeiro.

Surrounded by a **National Ecological Reserve**, the longevity of natural, green and panoramic view is forever guaranteed.

Implanted just **500 meters from the high-way**, it is less than 10 minutes away from the City center.



Location – Colinas do Cruzeiro



PROJECT



COLINA
DOS CEDROS
RESIDENCE

PROJECT



RESIDENCE

Private Condominium

T4 and T5

8.000 sqm' private garden

Swimming Pool

Gymnasium

View over a National Ecological Reserve

Innovative Architecture  **ATELIER** DIFUSOR
ARQUITETURA

Spacious Balconies with built-in BBQ

Private Parking Box



RESIDENCE

T4

240 sqm – Construction Area

59 sqm – Balconies

60 sqm* – Private Parking Box

*possibility of augmenting

T5

286 sqm – Construction Area

120 sqm – Balconies

75 sqm* – Private Parking Bpx

* possibility of augmenting

T4 - Rooftop

240 sqm – Construction Area

155 sqm – Balconies and Terrace

75 sqm* – Private Parking Box

* possibility of augmenting

T5 - Rooftop

286 sqm - Construction Area

205 sqm – Balconies and Terrace

75 sqm* – Private Parking Box

* possibility of augmenting



RESIDENCE



SUN

Facing South, our apartments guarantee the best sun exposure, with emphasis on the **bedrooms facing East, welcoming the morning sun** and the **living room and kitchen facing West, for a well-spent sunset on the terrace.**



LOCATION

Unobstructed view of a **National Ecological Reserve**

Conveniently located **500 meters away from IC17**, Colina dos Cedros Residence is less than 10 minutes from the city center.

Located in the southeastern part of Colinas do Cruzeiro, our project is surrounded by **Health Clinics, Supermarkets, Shopping Centers, Schools, Parks and Fitness Centers.**



CONDUMINIUM

With an unique location, Colina dos Cedros Residence offers, for the private use of all its owners, a swimming pool, a **event room**, a **fully equipped Gym with changing rooms** and over **8,000 m2 of green spaces with walking paths and relaxing areas.**



SPACES

No matter what apartment you choose, Colina dos Cedros Residence has the **largest indoor and outdoor areas on the market.**

With 240 m2 and 286 m2 of construction area and 51 m2 and 120 m2 of outdoor areas, **our apartments allow a peaceful lifestyle focused on well-being.**

SPECIFICITIES



Appliances  **BOSCH**

Ceramics PORCELANOSA®

Ceiling-height  doors from  **OKULTUS®**

Wood Floor  **SWISS KRONO**

Mirrors with built in TV **GLASS_MEDIA**

Heated Bathroom Floor

Central Heating and Vacuuming

Wood – Aluminium Windows with double
8mm glass



LIVING





CONDUMINIUM HALL



CONDUMINIUM HALL



KITCHEN



KITCHEN



WC



COLINA
DOS CEDROS
RESIDENCE



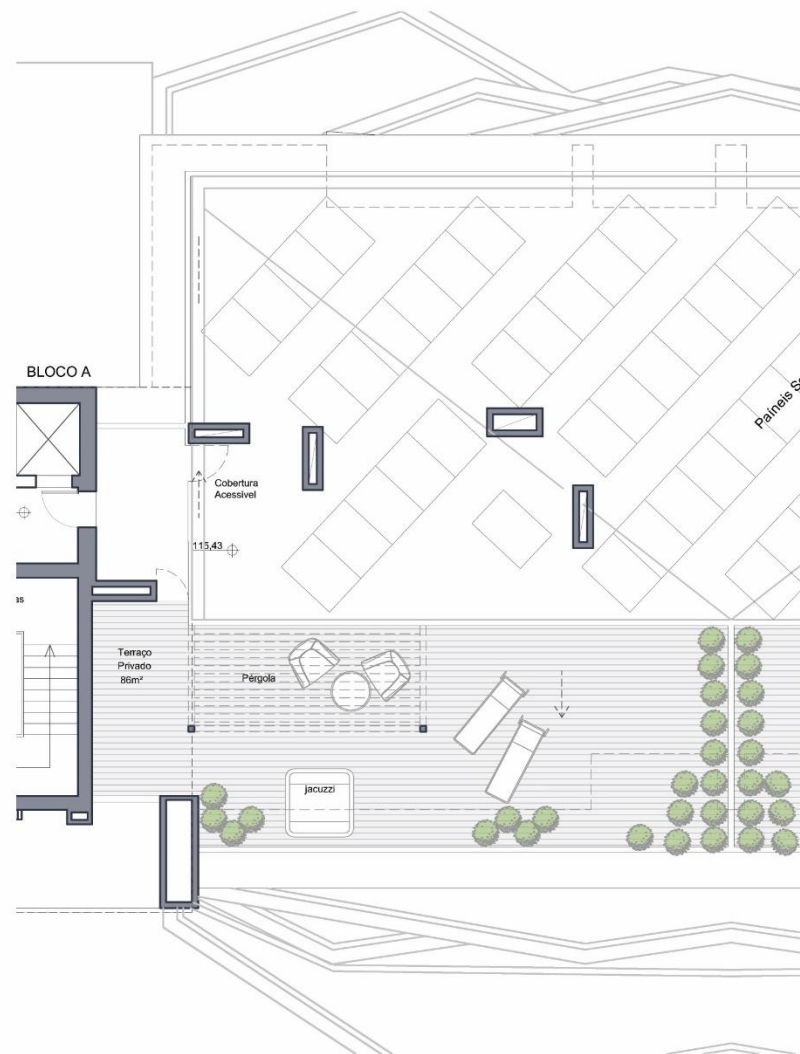
LIVING ROOM



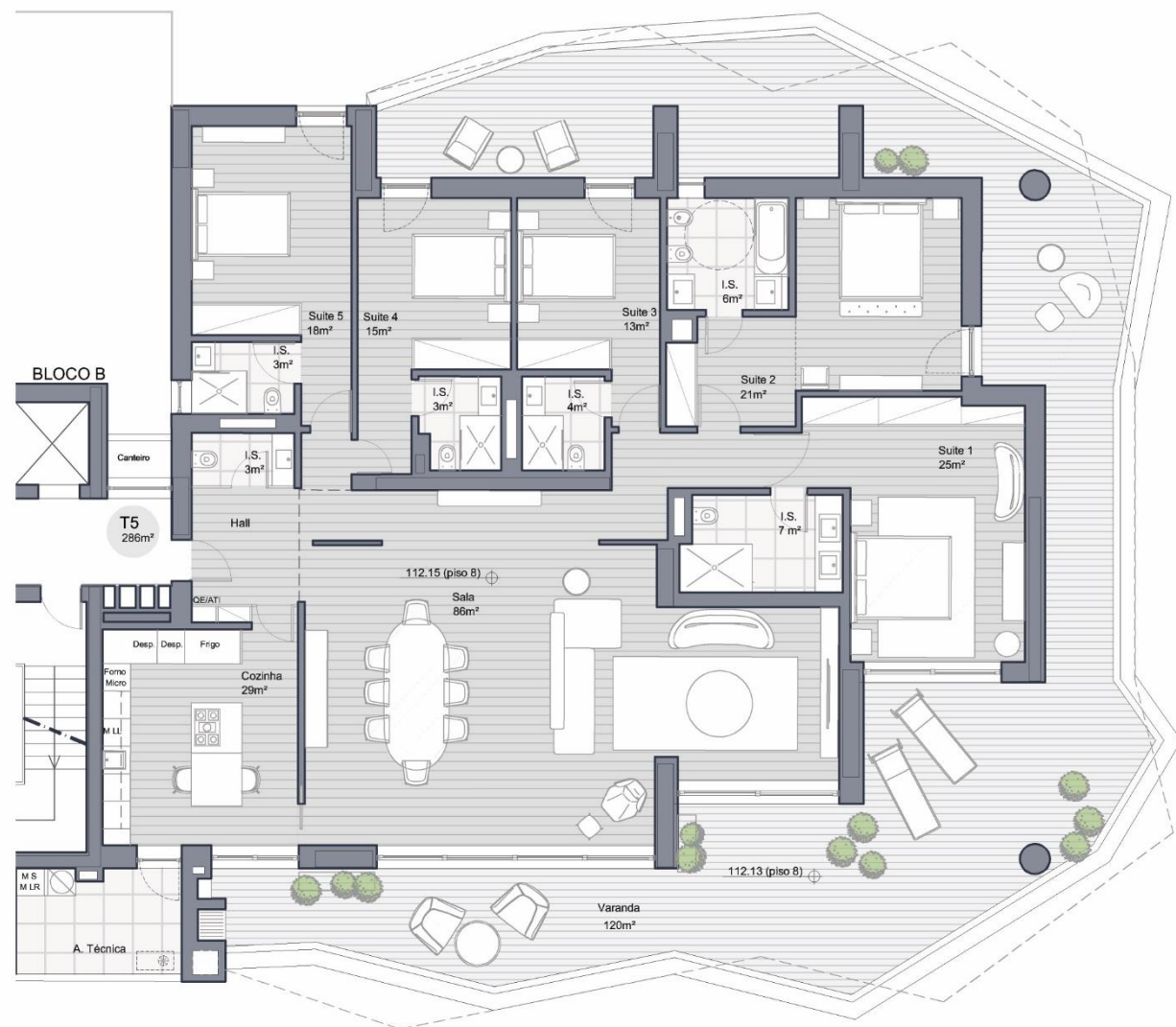
SUITE



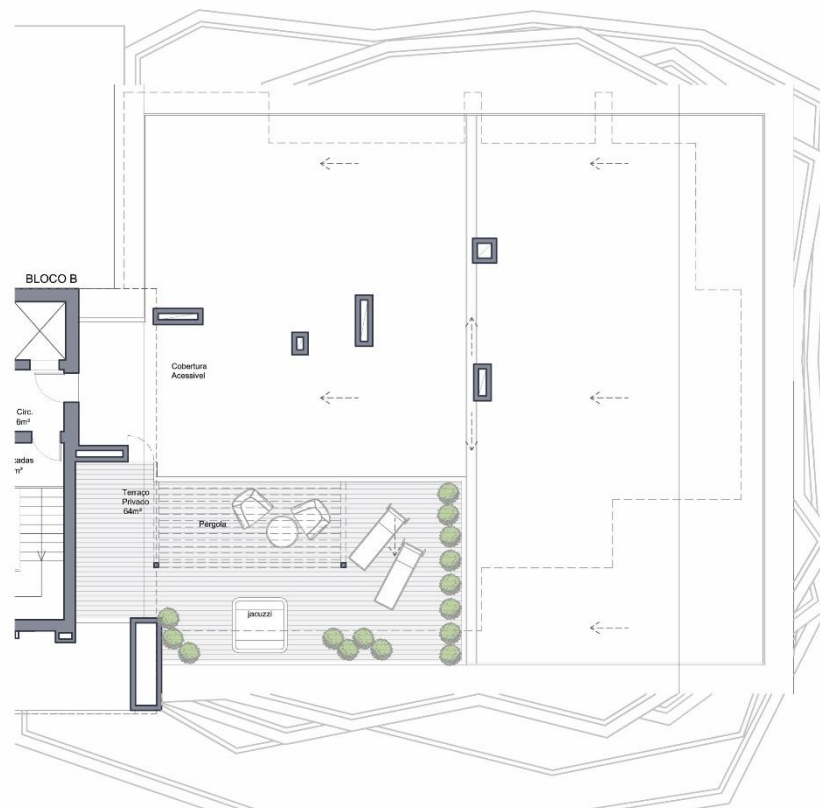
BALCONY



Floor Plan - T4 Rooftop



Floor Plan - T5



Floor Plan - T5 Rooftop

THE DEVELOPER

- Our core business is the **procurement of promising land plots for the prospected of designing, planning and commercializing residential living**
- **Colinas do Cruzeiro SA** was founded in **1997**. Since then, it has been the **leading real estate developement in its area**, with over **1000 apartments built, 95 commercial spaces** and over a gross development value of **800 million euros**
- We focus on the development of **residential multi-storey buildings**, specializing in the **development of a specific neighbourhood** and it's surroundings in order to offer the **highest quality of materials** and also na **overall better lifestyle experience**.



COLINAS DO CRUZEIRO S.A.
LOCATE, BUILD AND LIVE



CONTACTS



+351 910 680 646



geral@colinadoscedros.pt



SALES CENTER

Rua Pulido Valente 1

2675 – 670 Odivelas



COLINA DOS CEDROS RESIDENCE

Rua Antero de Quental 1

2675 – 690 Odivelas

SCHEDULE

10:00 | 19:00 Monday to Saturday

